



GREENTOW

WE'RE WRITING THE BOOK ON MOBILE SOLAR

M
O
B
I
L
E

S
O
L
A
R

P
O
W
E
R



GT916



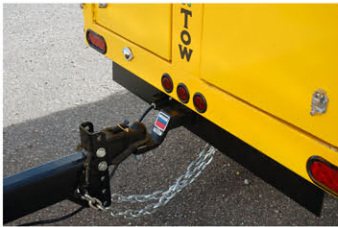
GT1932



GT3049

What makes a **GREEN**Tow

Some define us as the most efficient mobile solar power system in the world; **they're right**. Our customers exclaim that we have developed the only weather proof and climate resistant units available; **we have**. Others call us the 'ruggedized' version of mobile solar power; **we are**. It has been said we offer the most powerful solutions for space restraints; **we do**. We have been named the only truly customizable, built from the ground-up, fully supported, and ultimately superior solution for clean mobile power; **we agree. And so will you!**



Need to move more than one GreenTow Trailer at a time. Our new receiver option lets you do just that. Pull two trailers at once.



Our custom designed and patent pending array allows for secure and sleek transport of solar panels and fast and sturdy deployment in any environment.



Our standard ground mounting jacks makes it easy to secure and stabilize a GreenTow in any condition.



GreenTow incorporates OutBack inverters. Considered by industry leaders to offer the most rugged and adaptable technology for off-grid or backup PV applications.



16" Custom wheels, 7000# axles with electric brake, battery box and switch, and Leaf Springs-Slipper.



Custom removable hitch. Safety Chains with S-hooks. 2 5/16" adjustable coupler/hitch. 7 way RF plug.



Optional built-in generator.



Each GreenTow trailer is outfitted with a recessed LED lighting system with internal wiring.



Sun Xtender Batteries are the original "AGM" (Absorbent Glass Mat) Technology adopted by the U.S. Military and Airframe Mfgs. Deep cycle, sealed, maintenance free. High density plate technology providing superior reliability, power, and extended cycle life.



KYOCERA high efficiency multicrystal photovoltaic (PV) modules. Industry leader worldwide.



GreenTow control panels offer both AC and DC output. Utilizing standard 12v / 120v / 240v receptacles with easy to read LCD display. We always meet or exceed UL standards.



GreenTow trailers are equipped with stainless steel non rusting vents and flush mounted stainless steel locking hardware.



Toggle switch controlled actuator(s) means very little effort is required of the user to move the array to the correct pitch.



GT916

The smallest in the GreenTow family. Our light and space friendly unit is perfect for those who don't have large trucks or space available. Don't let the small foot print fool you; these small units still pack a punch!

GT1932

Our midsize unit. For the jobs that require more power usage and more power storage; this is your trailer. Capable of storing over 1,500 amp hours of juice with twice the array output of it's smaller brother; this unit should be named the workhorse.



GT3049

The largest of the fleet... Big Brother. Our largest unit will store and produce more power than any other size comparable unit in the world. This is for the jobs that a single mobile solar unit couldn't do; until now.

<i>Models</i>									Total KW with Full Sun		
	<i>L</i>	<i>W</i>	<i>H</i>	<i>Weight</i>	<i>PV Modules</i>	<i>Inverters</i>	<i>Batteries</i>	<i>Volts</i>	<i>Peak Output</i>	<i>Four Hours</i>	<i>Eight Hours</i>
GT916	9'	5'10"	6'	3,300 lbs	12	1	4	120	6.0 kw	3.6 kw	3.0 kw
				4,100 lbs	12	2	8	120/240	12.0 kw	6.8 kw	4.5 kw
GT1932	19'	5'10"	6'	5,100 lbs	24	1	8	120	6.0 kw	3.6 kw	3.6 kw
				5,900 lbs	24	2	12	120/240	12.0 kw	7.2 kw	7.2 kw
				6,700 lbs	24	3	16	120/240/3phase	18.0 kw	10.8 kw	8.9 kw
GT3049	30'	5'10"	6'	7,300 lbs	36	1	8	120	6.0 kw	3.6 kw	3.6 kw
				8,200 lbs	36	2	12	120/240	12.0 kw	7.2 kw	7.2 kw
				9,000 lbs	36	3	16	120/240/3phase	18.0 kw	10.8 kw	10.5 kw

Hybrid trailers with built in back-up generator available

GreenTow power units are as diverse as the applications for which they are used. Coupled with creative engineering and real world input, GreenTow has created the first of its kind. A functional state of the art mobile unit providing clean, quiet, green power. From homes and cabins to large military and disaster services. Whatever your mobile clean power needs are, GreenTow has the solution. GreenTow trailers are the most advanced mobile solar power units to ever be constructed. To insure our position as the industry leader, GreenTow incorporates the highest quality components coupled with some of the most experienced mechanical and electrical "green" engineers. GreenTow is the uncontested industry leader for mobile green power. Additionally, our teams of mechanical and electrical Engineers are prepared to meet any custom or unique, green, mobile power needs.

www.GreenTow.com

CLEAN POWER

Never has clean power been so powerful! No other mobile clean power solution even comes close.



CONTACT US

We would love to hear from you. Please feel free to contact us with any questions you might have.

EMAIL

Sales@GreenTow.com
Info@GreenTow.com
PR@GreenTow.com

PHONE

800-277-6618
(435) 628-9726

FAX

(435) 628-9725

892 E Commerce Dr, St George, UT 84790